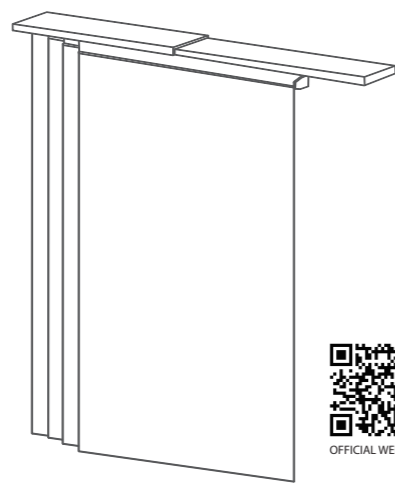
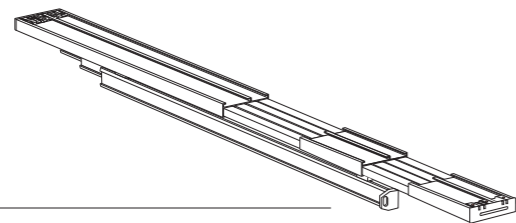


INSTRUCTION

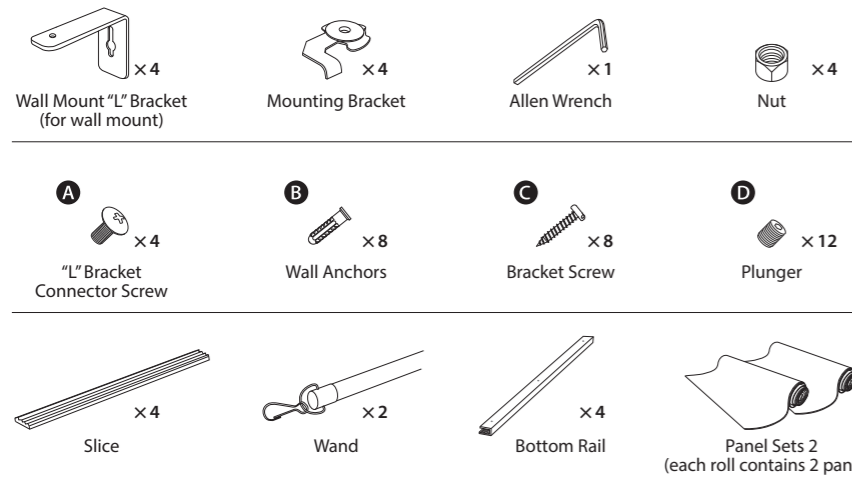
Adjustable 4 Rail Panel System



Parts

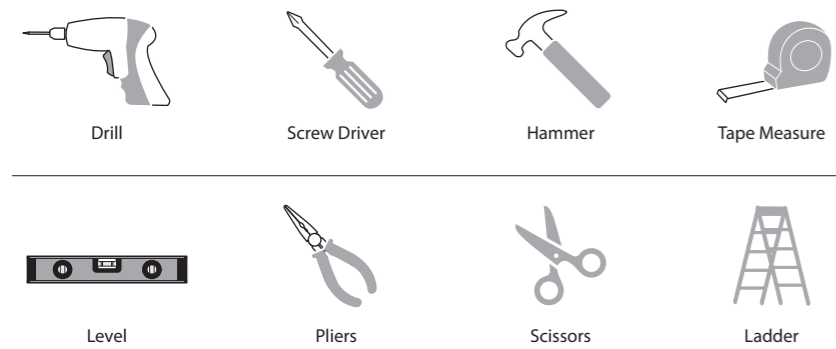


Adjustable Quad-Rail Track x1



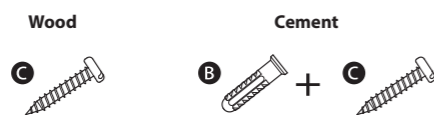
Check all pieces before installation. Please contact GoDear Design directly if your product is missing items or parts.

Prepare Tools



Remark

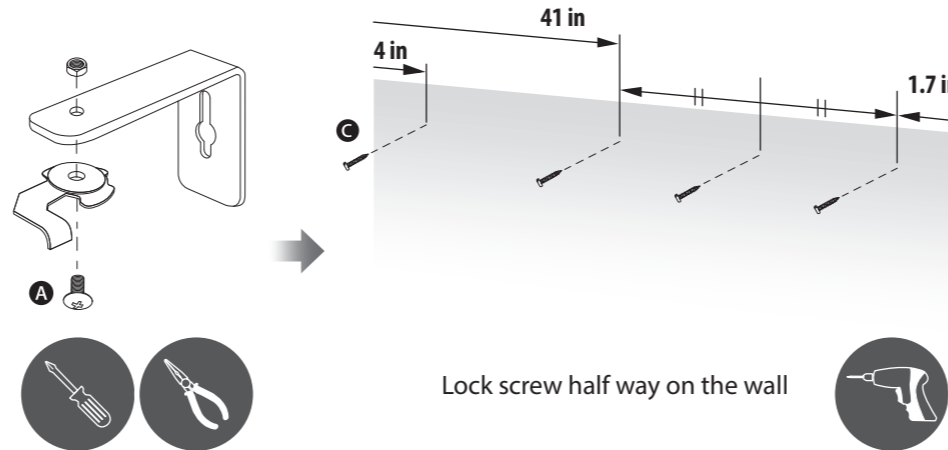
Screw Suggestion



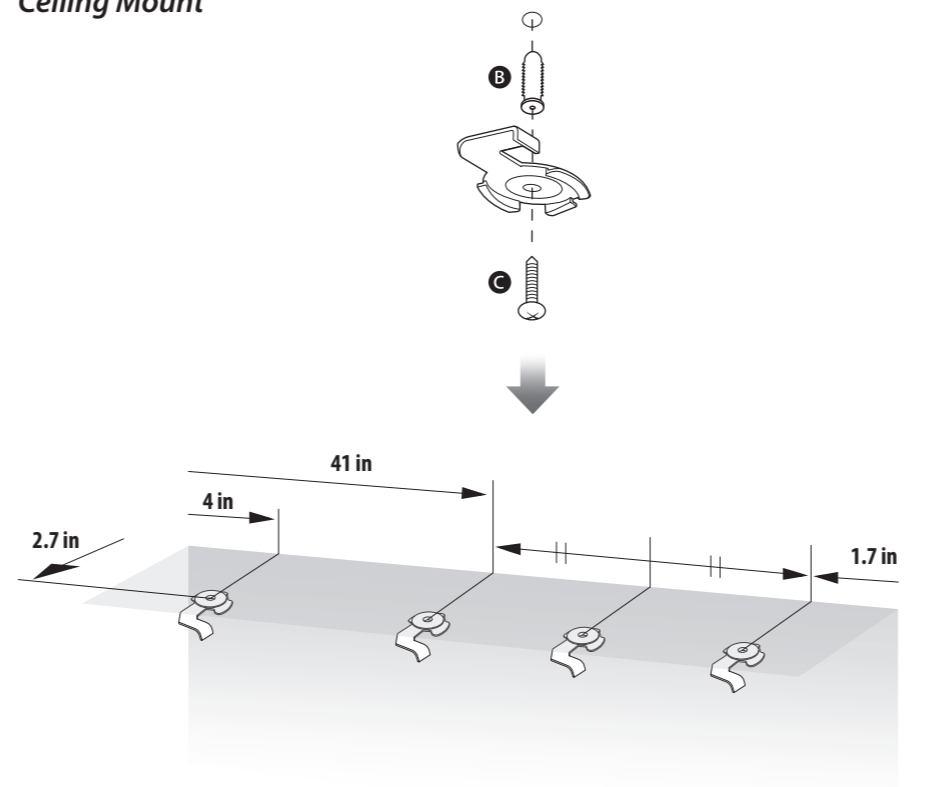
Installation

Step 1 - Install the Brackets (Wall Mount or Ceiling Mount)

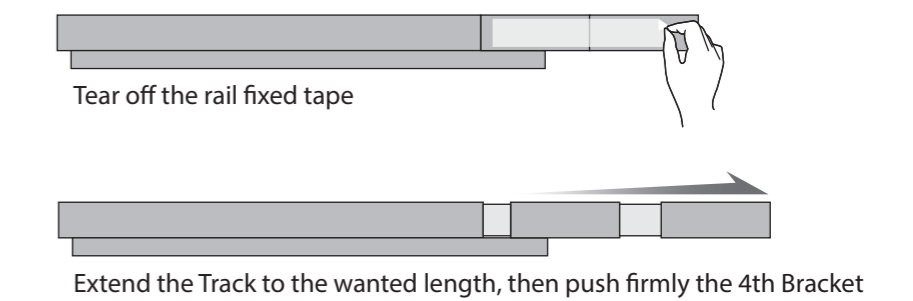
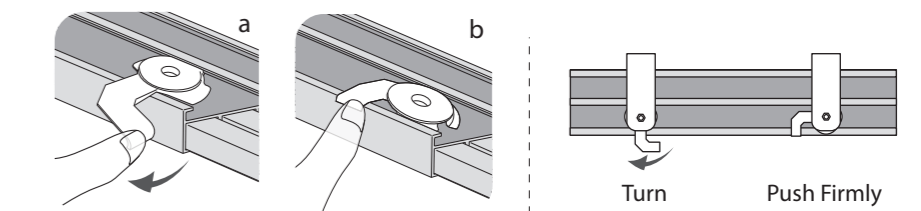
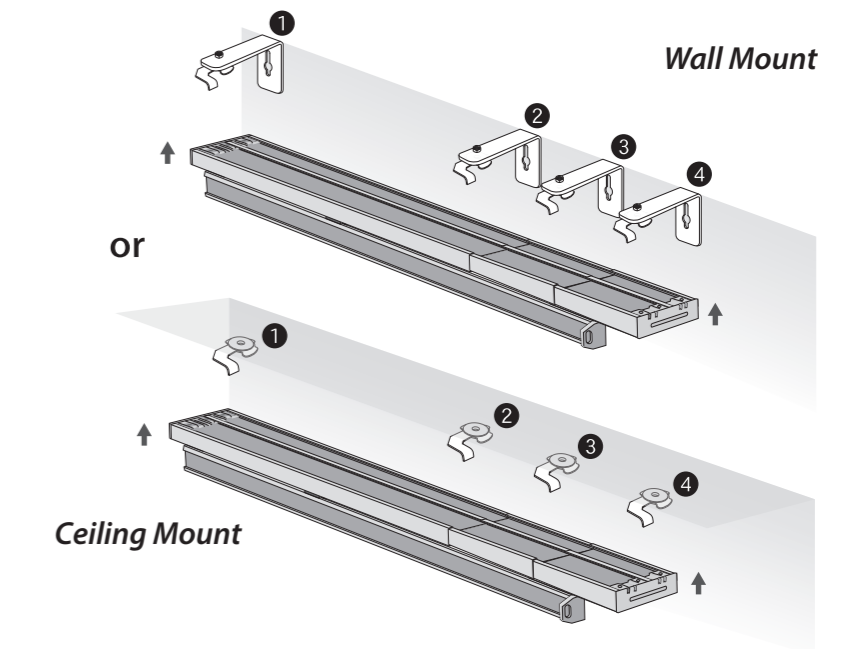
Wall Mount



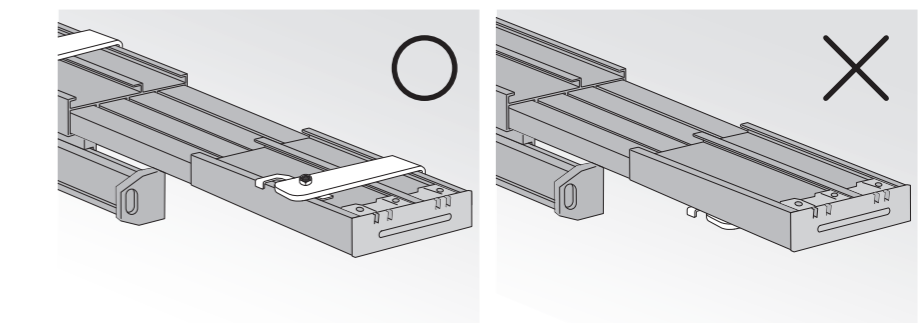
Ceiling Mount



Step 2 - Attach the Mounting Brackets to the Track

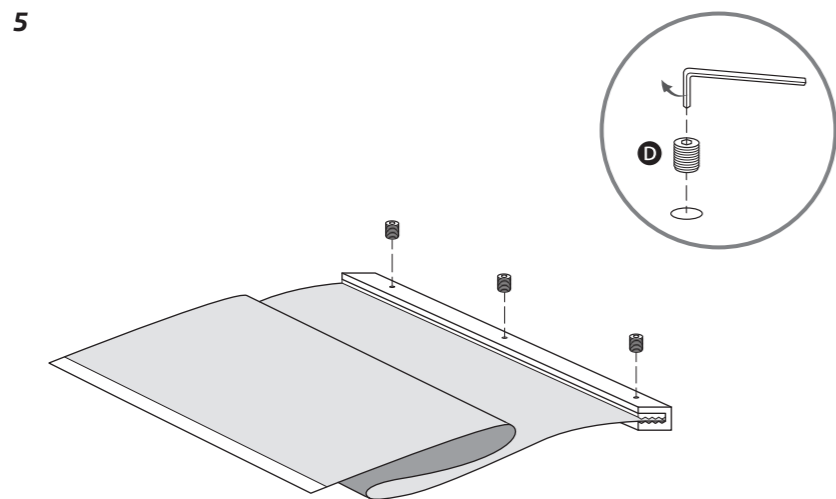
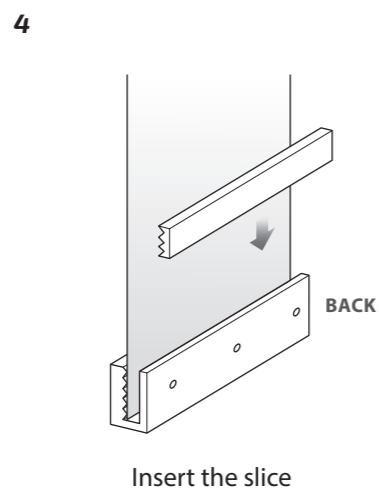
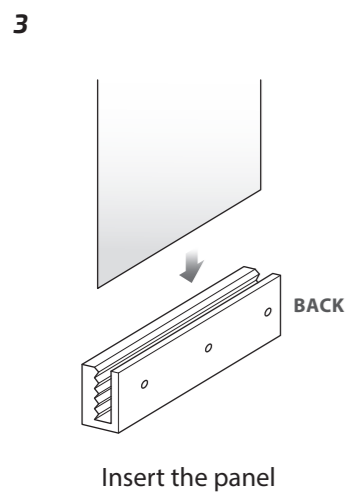
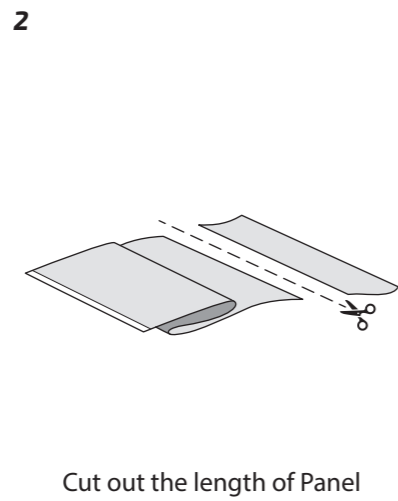
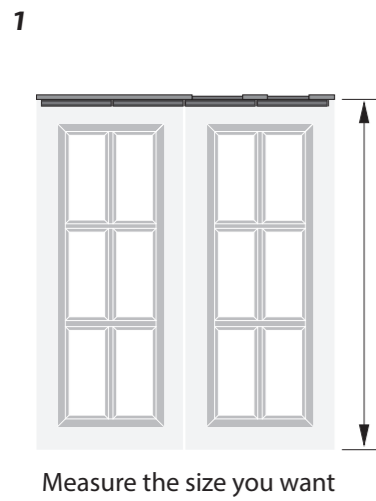


DO NOT over extend the track as if may cause to separate completely.



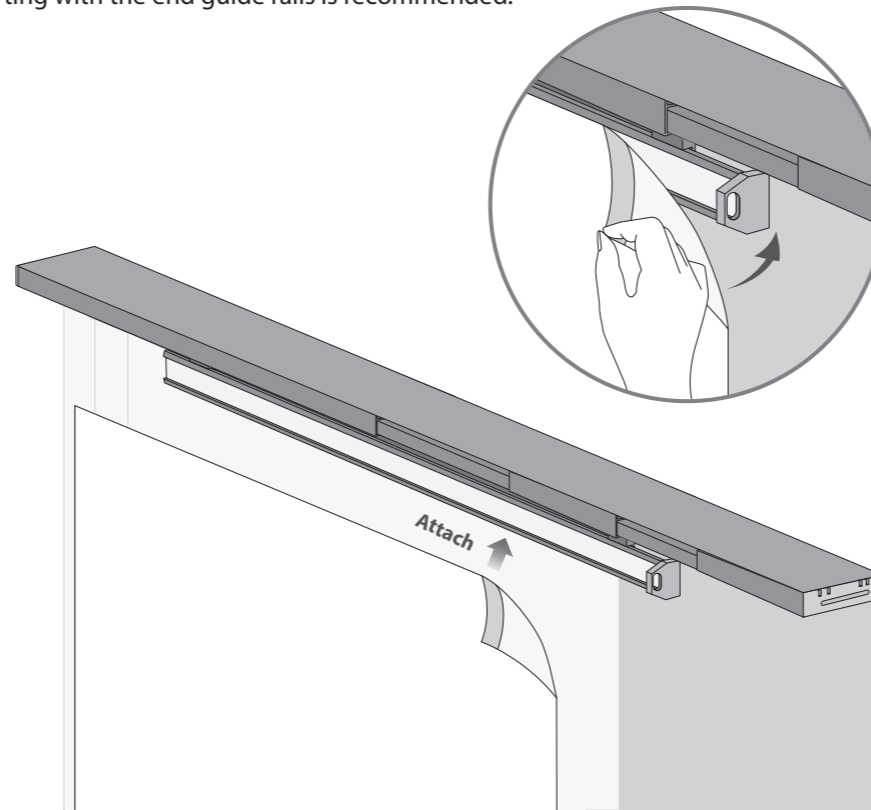
DO NOT put the Track upon the Brackets.

Step 3 - Sliding Panel

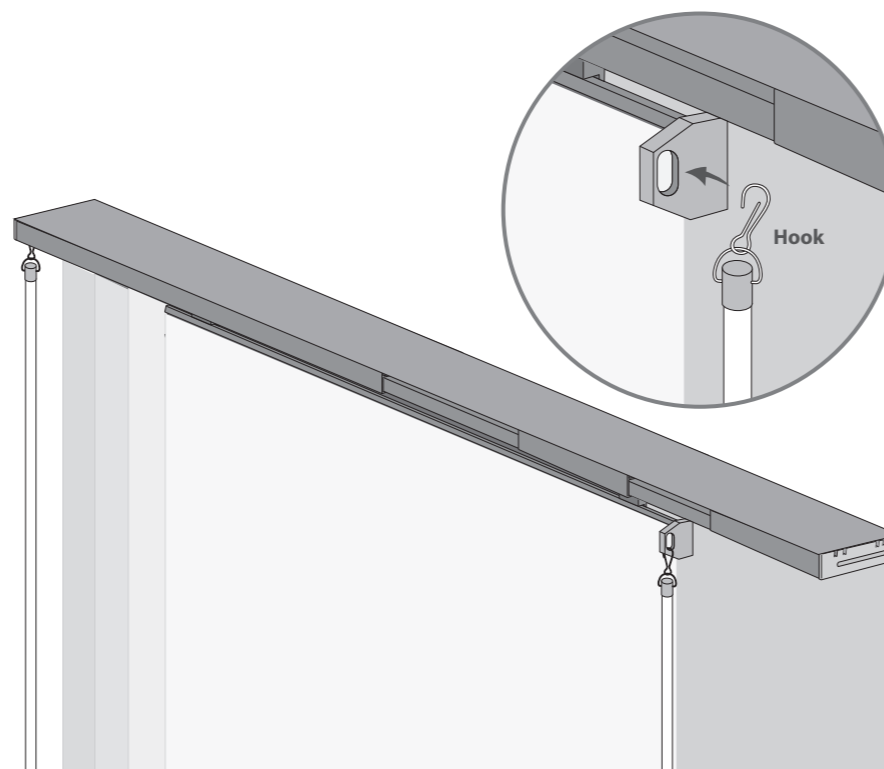


Step 4 - Attach the Panels

Attach fabric panels to the pre-installed guide rails of the track using durable Velcro. Starting with the end guide rails is recommended.



Step 5 - Attach the 2 wands to the leading and ending guide rails



Tips

Best 45 degree , use wand to open and close fabric panels with ease.

